

4

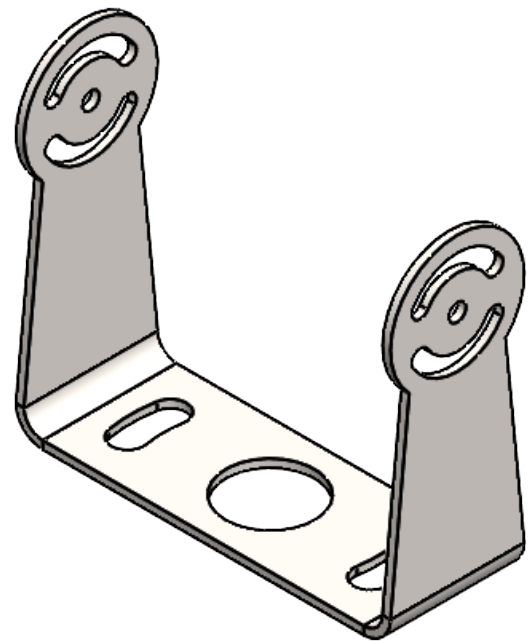
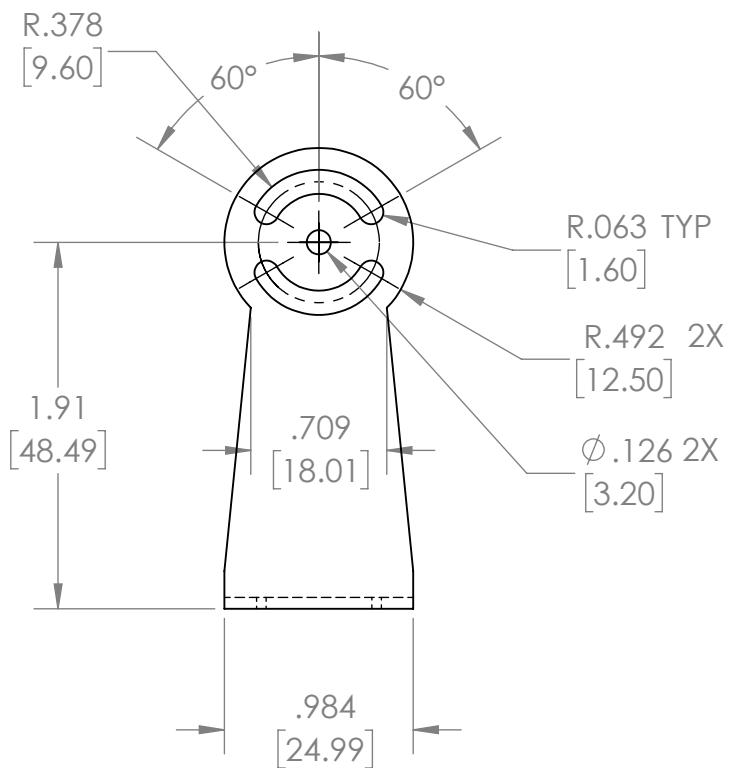
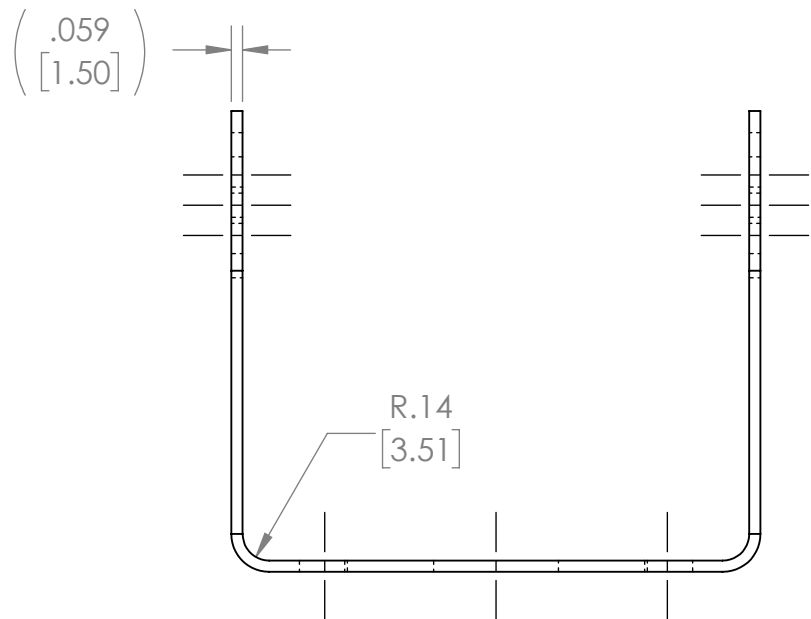
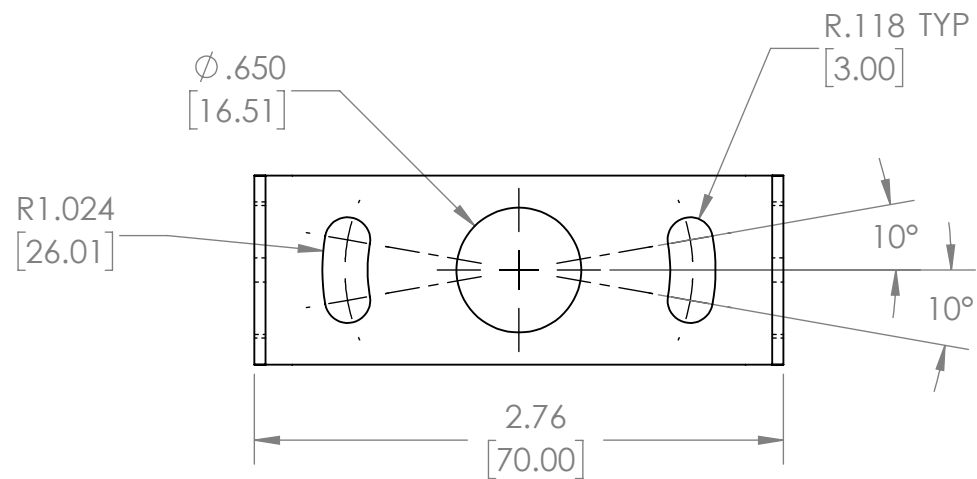
3

2

1

REVISIONS			
REV	DESCRIPTION	DATE	BY
1	INITIAL RELEASE	2/1/21	BW

B



B

A

- NOTE:
- DUAL DIMENSIONS ARE IN INCHES [MM]
 - MATERIAL: 16 GA [1.50] LOW CARBON STEEL
 - FINISH: POWDER COAT
 - TOLERANCES:
 - .XXX = $\pm .005$
 - .XX = $\pm .02$

CONFIDENTIALITY
THE INFORMATION CONTAINED IN
THIS DRAWING IS THE SOLE
PROPERTY OF REAR VIEW SAFETY,
INC. ANY REPRODUCTION IN PART
OR AS A WHOLE WITHOUT THE
WRITTEN PERMISSION OF REAR VIEW
SAFETY, INC. IS PROHIBITED.

DESCRIPTION:

BRACKET, CAMERA MOUNT

DRWN:

BW

2/1/21

UNLESS OTHERWISE SPECIFIED:

SIZE

B

SCALE:

1:1

DIMENSIONS ARE IN INCHES
TOLERANCES:
FRACTIONAL $\pm 1/16"$
ANGULAR: MACH $\pm .5$ BEND $\pm .5$
TWO PLACE DECIMAL $\pm .015$
THREE PLACE DECIMAL $\pm .005$



BROOKLYN - NEW YORK

PART NUMBER:

RVS-770-BK

REV:

1

4

3

2

1

A